

Episode 11: Fair Health Pricing Demo



Demo:

fairhealthconsumer.org

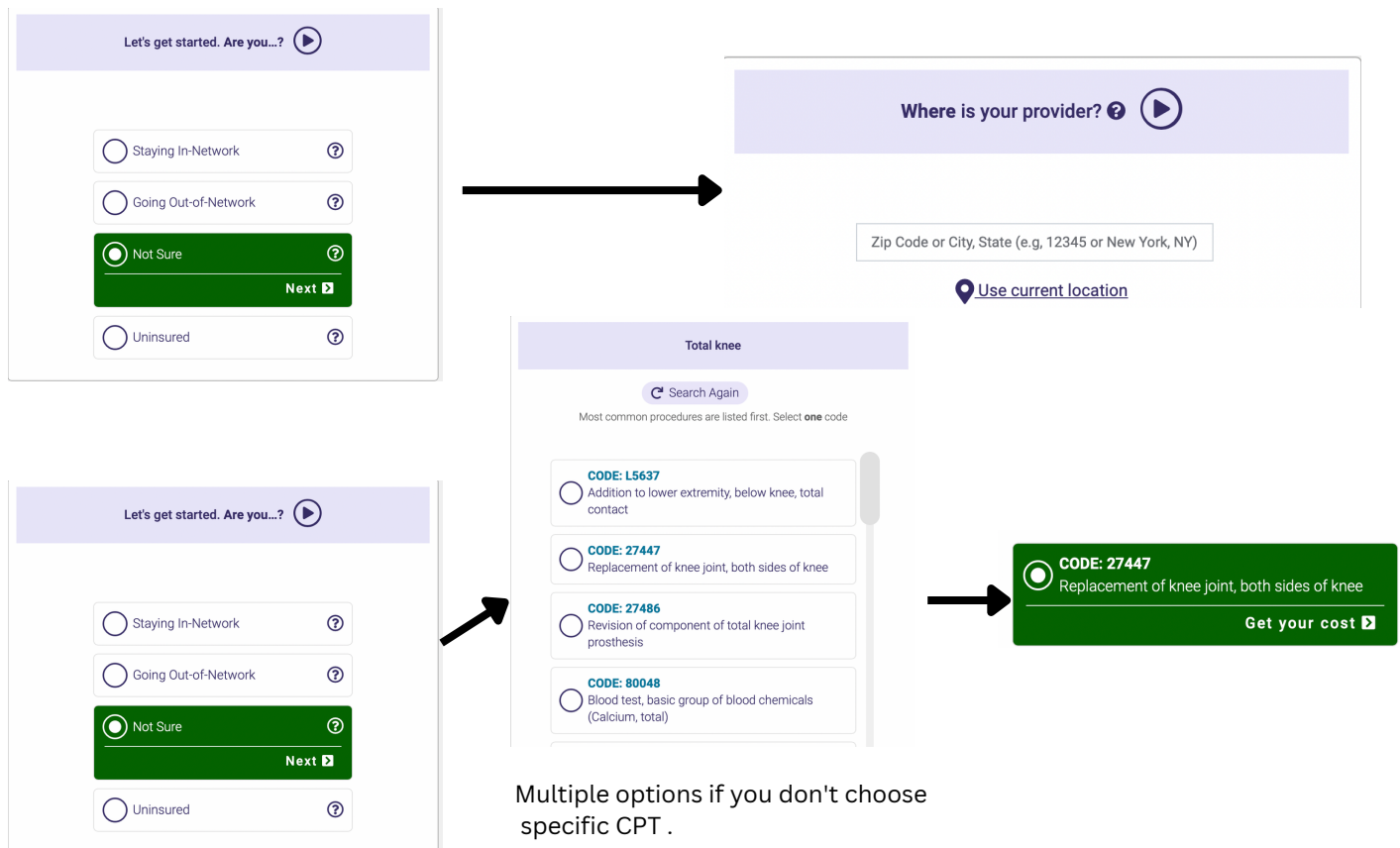
eHealthcare LEADERSHIP AWARDS 2022 WINNER

Consumers Estimate your healthcare expenses

Get essential information on costs for thousands of procedures and learn [insurance basics](#).

- Medical and Hospital Costs
- Dental Services
- Shoppable Services

- 1) Click on Medical and Hospital Costs.
- 2) You will be asked a series of questions.



Adding in procedures to get to total costs.

Total Knee Procedure Only

Primary Medical Procedure		\$5,665	\$2,833
Medical Procedure Replacement of knee joint, both sides of knee CPT Code: 27447 △			
See out-of-network Reimbursement			
Possible additional related costs are listed below. You can add them to the Primary Medical Procedure. This will update the Total Cost amount below.			
Related Costs (if Applicable)	+ Add All	Out-of-Network/ Uninsured Price	In-Network Price
Anesthesia Anesthesia for procedure for total knee joint replacement CPT Code: 01402	+ Add	\$3,941	\$1,804
Radiology X-ray of knee, 1-2 views CPT Code: 73560 △ ▽	+ Add	\$46	\$22
Pathology Pathology examination of tissue using a microscope, intermediate complexity CPT Code: 88305	+ Add	\$187	\$83
Pathology Preparation of tissue for examination by removing any calcium present CPT Code: 88311	+ Add	\$70	\$31
Facility Costs Hospital (Outpatient)	+ Add		
Total Cost		\$5,665 <small>Out-of-Network/ Uninsured Price</small>	\$2,833 <small>In-Network Price</small>

Total Costs - Adding Anesthesiology and Facility

Medical Procedure		\$5,665	\$2,833
Medical Procedure Replacement of knee joint, both sides of knee CPT Code: 27447 △			
See out-of-network Reimbursement			
Possible additional related costs are listed below. You can add them to the Primary Medical Procedure. This will update the Total Cost amount below.			
Related Costs (if Applicable)	+ Add All	Out-of-Network/ Uninsured Price	In-Network Price
Anesthesia Anesthesia for procedure for total knee joint replacement CPT Code: 01402	- Remove	\$3,941	\$1,804
Radiology X-ray of knee, 1-2 views CPT Code: 73560 △ ▽	+ Add	\$46	\$22
Pathology Pathology examination of tissue using a microscope, intermediate complexity CPT Code: 88305	+ Add	\$187	\$83
Pathology Preparation of tissue for examination by removing any calcium present CPT Code: 88311	+ Add	\$70	\$31
Facility Costs Hospital (Outpatient)	- Remove		
Hospital (Outpatient) Hospital Outpatient Facility (HOSPF) estimate for procedure code 27447 (in addition to your doctor's fee) Ⓜ CPT Code: 27447 △	- Remove	\$22,841	\$6,739
Total Cost		\$32,447 <small>Out-of-Network/ Uninsured Price</small>	\$11,376 <small>In-Network Price</small>